

BALDOR® • RELIANCE 

Product Information Packet

ERL1319A277

1.5HP,1760RPM,1PH,60HZ,56H,3540LC,OPEN,F

Part Detail							
Revision:	P	Status:	PRD/A	Change #:		Proprietary:	No
Type:	AC	Elec. Spec:	35WGL161	CD Diagram:	CD0002A02	Mfg Plant:	
Mech. Spec:	35F554	Layout:	35LYF554	Poles:	04	Created Date:	09-29-2014
Base:	RS	Eff. Date:	11-27-2018	Leads:	2#16 A PH,3#18 B&J		

Specs			
Catalog Number:	ERL1319A277	KVA Code:	K
Enclosure:	OPEN	Lifting Lugs:	No Lifting Lugs
Frame:	56H	Locked Bearing Indicator:	No Locked Bearing
Frame Material:	Steel	Motor Lead Quantity/Wire Size:	2 @ 16 AWG, A PH
Output @ Frequency:	1.500 HP @ 60 HZ	Motor Lead Exit:	Terminal Panel
Synchronous Speed @ Frequency:	1800 RPM @ 60 HZ	Motor Lead Termination:	Flying Leads With QC
Voltage @ Frequency:	277.0 V @ 60 HZ	Motor Type:	3540LC
XP Class and Group:	None	Mounting Arrangement:	F1
XP Division:	Not Applicable	Power Factor:	93
Agency Approvals:	UR	Product Family:	General Purpose
	CSA	Pulley End Bearing Type:	Ball
Auxillary Box:	No Auxillary Box	Pulley Face Code:	Resilient Mount
Auxillary Box Lead Termination:	None	Pulley Shaft Indicator:	Standard
Base Indicator:	Resilient	Rodent Screen:	None
Bearing Grease Type:	Polyrex EM (-20F +300F)	RoHS Status:	ROHS COMPLIANT
Blower:	None	Shaft Extension Location:	Pulley End
Current @ Voltage:	5.200 A @ 277.0 V	Shaft Ground Indicator:	No Shaft Grounding
Design Code:	L	Shaft Rotation:	Reversible

Drip Cover:	No Drip Cover	Shaft Slinger Indicator:	No Slinger
Duty Rating:	CONT	Speed Code:	Single Speed
Electrically Isolated Bearing:	Not Electrically Isolated	Motor Standards:	NEMA
Feedback Device:	NO FEEDBACK	Starting Method:	Direct on line
Front Face Code:	Terminal Panel	Thermal Device - Bearing:	None
Front Shaft Indicator:	None	Thermal Device - Winding:	None
Heater Indicator:	No Heater	Vibration Sensor Indicator:	No Vibration Sensor
Insulation Class:	F	Winding Thermal 1:	Automatic Thermal Overload
Inverter Code:	Not Inverter	Winding Thermal 1 Location:	ES
		Winding Thermal 2:	None

Nameplate NP3273L										
CAT.NO.	ERL1319A277									
SPEC.	35F554L161G1									
HP	1.5									
VOLTS	277									
AMP	5.2									
RPM	1760									
FRAME	56H				HZ	60			PH	1
SER.F.	1.15		CODE	K	DES	L		CL	F	
F.L. AVG. EFF.	84		PF	93						
RATING	40C AMB-CONT									
CC									USABLE AT 208V	
DE	6203				ODE	6203				
ENCL	OPEN		SN							

Parts List		
Part Number	Description	Quantity
SA288442	SA 35F554L161G1	1.000 EA
RA274633	RA 35F554L161G1	1.000 EA
OC3016F12SP	CYL OIL CAP 16MFD/370V	1.000 EA
EC1216C06SP	ELEC CAP, 216-259 MFD, 250V, 2.06D X 4.	1.000 EA
35CB4500SP	TERMINAL BOX LID STAMPED	1.000 EA
51XW0832A07	8-32 X .44, TAPTITE II, HEX WSHR SLTD SE	2.000 EA
11XW0832G06	#8-32 X 3/8, TAPTITE II, HEX WSHR SLTD	1.000 EA
LD5000A01	LEAD ASSY, ML1400DF14 7" RING TRM EA END	1.000 EA
51XW1032A06	10-32 X .38, TAPTITE II, HEX WSHR SLTD S	2.000 EA
HW1003A10	WASHER, #10 EX TH LK, ZN X	2.000 EA
35EP3202A01	STD OPEN FR EP - RESILIENT MTD	1.000 EA
51XW0832A07	8-32 X .44, TAPTITE II, HEX WSHR SLTD SE	3.000 EA
RM1000A02	CUSHION RING, MODEL 35 SAME AS A07	1.000 EA
HA6005A01	CLAMP, BASE	2.000 EA
51XN1032A20	10-32 X 1 1/4 HX WS SL SR	1.000 EA
51XN1032A20	10-32 X 1 1/4 HX WS SL SR	1.000 EA
XY1032A02	10-32 HEX NUT DIRECTIONAL SERRATION	1.000 EA
35CB3801	CAPACITOR COVER, CAST	1.000 EA
HA7010	CAPACITOR RETENTION CLAMP	1.000 EA
NS2501A02	INSULATOR, CAPACITOR BOX	1.000 EA
51XB1016A08	10-16X 1/2HXWSSLD SERTYB	2.000 EA
HW5100A03	WAVY WASHER (W1543-017)	1.000 EA
35EP3203A01	STD PU EP, OPEN RESIL MTG	1.000 EA
RM1000A02	CUSHION RING, MODEL 35 SAME AS A07	1.000 EA

Parts List (continued)		
Part Number	Description	Quantity
HA6005A01	CLAMP, BASE	2.000 EA
XY1032A02	10-32 HEX NUT DIRECTIONAL SERRATION	1.000 EA
XY1032A02	10-32 HEX NUT DIRECTIONAL SERRATION	4.000 EA
HW2501D13	KEY, 3/16 SQ X 1.375	1.000 EA
HA7000A04	KEY RETAINER 0.625 DIA SHAFTS	1.000 EA
85XU0407S04	4X1/4 U DRIVE PIN STAINLESS	2.000 EA
WD4100A01	DP-875 HEYCO PLUG OR 62MP0875 MICRO PLAS	1.000 EA
WD1000A15	3-520132-2 AMP FLAG (4M/RL NON-CANC/NON-	4.000 EA
MJ1000A02	GREASE, MOBIL POLYREX EM - 124047	0.050 LB
MG1000G27	MED CHARCOAL METALLIC GREY 400-0096	0.017 GA
SP5077A15	MDL 35 TERM PANEL SWITCH, NO HARDWARE, W	1.000 EA
35BA4002J01	RESILIENT BASE, STAMPED	1.000 EA
HA3100A26	THRUBOLT 10-32 X 11.500	4.000 EA
LB1118	LABEL,WARNING (ROLL LABEL)	1.000 EA
LC0002	CONNECTION LABEL	1.000 EA
NP3273L	ALUM SUPER-E THERMALLY PROTECTED	1.000 EA
36PA1000	PKG GRP, PRINT PK1016A06	1.000 EA
MN416A01	TAG-INSTAL-MAINT no wire (1200/bx) 3/19	1.000 EA

AC Induction Motor Performance Data

Record # 61966 - Typical performance - not guaranteed values

Winding: 35WGL161-R002	Type: 3540LC	Enclosure: OPEN
-------------------------------	---------------------	------------------------

Nameplate Data				277 V, 60 Hz: Single Voltage Motor	
Rated Output (HP)	1.5			Full Load Torque	4.5 LB-FT
Volts	277			Start Configuration	direct on line
Full Load Amps	5.2			Breakdown Torque	12.3 LB-FT
R.P.M.	1760			Pull-up Torque	12.4 LB-FT
Hz	60	Phase	1	Locked-rotor Torque	15.5 LB-FT
NEMA Design Code	L	KVA Code	K	Starting Current	47.9 A
Service Factor (S.F.)	1.15			No-load Current	1.79 A
NEMA Nom. Eff.	84	Power Factor	93	Line-line Res. @ 25°C	2.36 Ω A Ph 2.9 Ω B Ph
Rating - Duty	40C AMB-CONT			Temp. Rise @ Rated Load	37°C
S.F. Amps				Temp. Rise @ S.F. Load	44°C
				Locked-rotor Power Factor	100
				Rotor inertia	0.237 LB-FT ²

Load Characteristics 277 V, 60 Hz, 1.5 HP

% of Rated Load	25	50	75	100	125	150	S.F.
Power Factor	67	84	90	93	94	95	94
Efficiency	68.7	80.5	83.9	84.3	83.1	80.6	83.6
Speed	1790	1781	1770	1759	1747	1732	1752
Line amperes	2.2	3.03	4.01	5.2	6.5	7.96	5.98

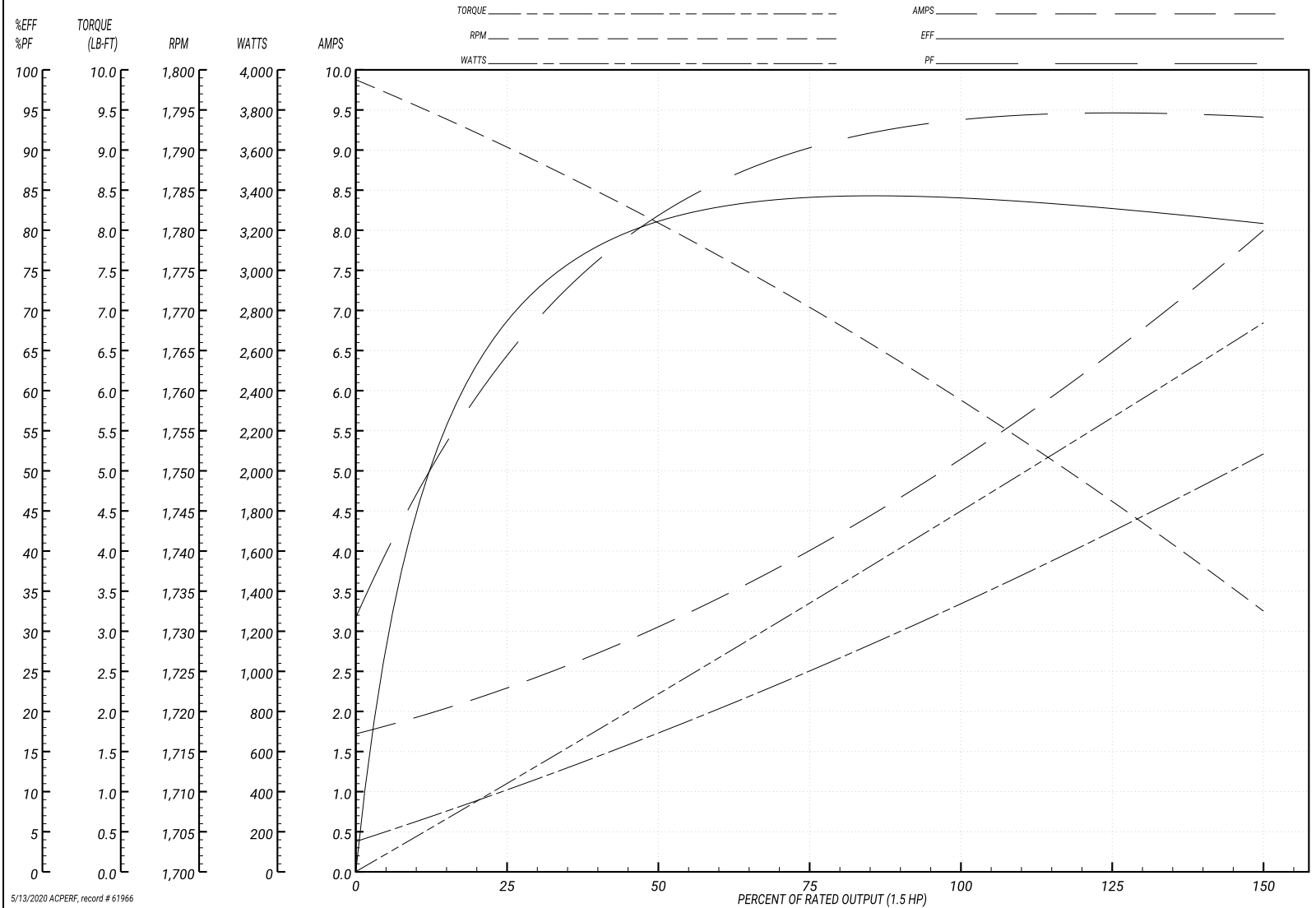
Performance Graph at 277V, 60Hz, 1.5HP Typical performance - Not guaranteed values

ABB Motors and Mechanical Inc.

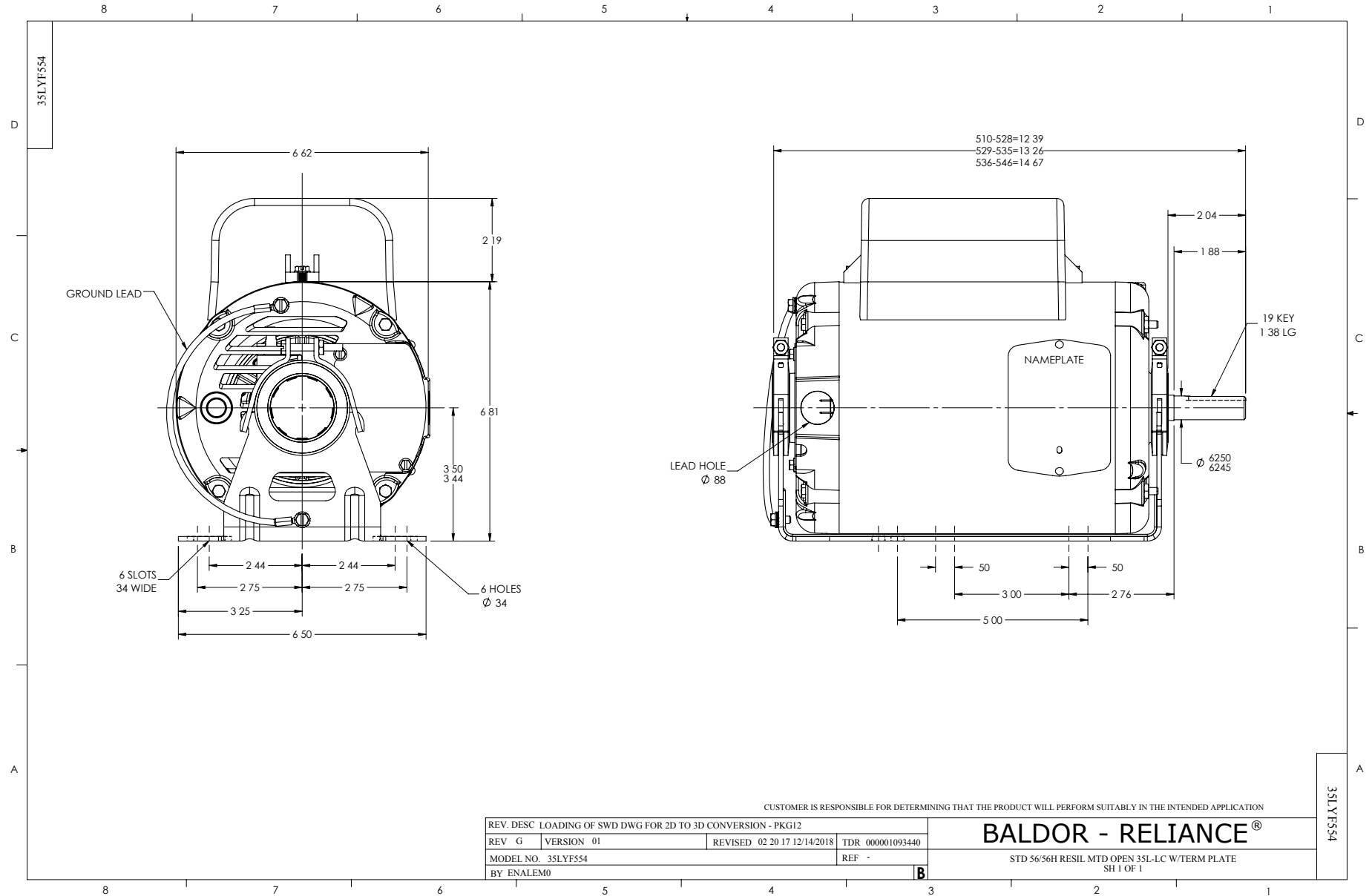
WINDING # 35WGL161

Typical performance - not guaranteed values.

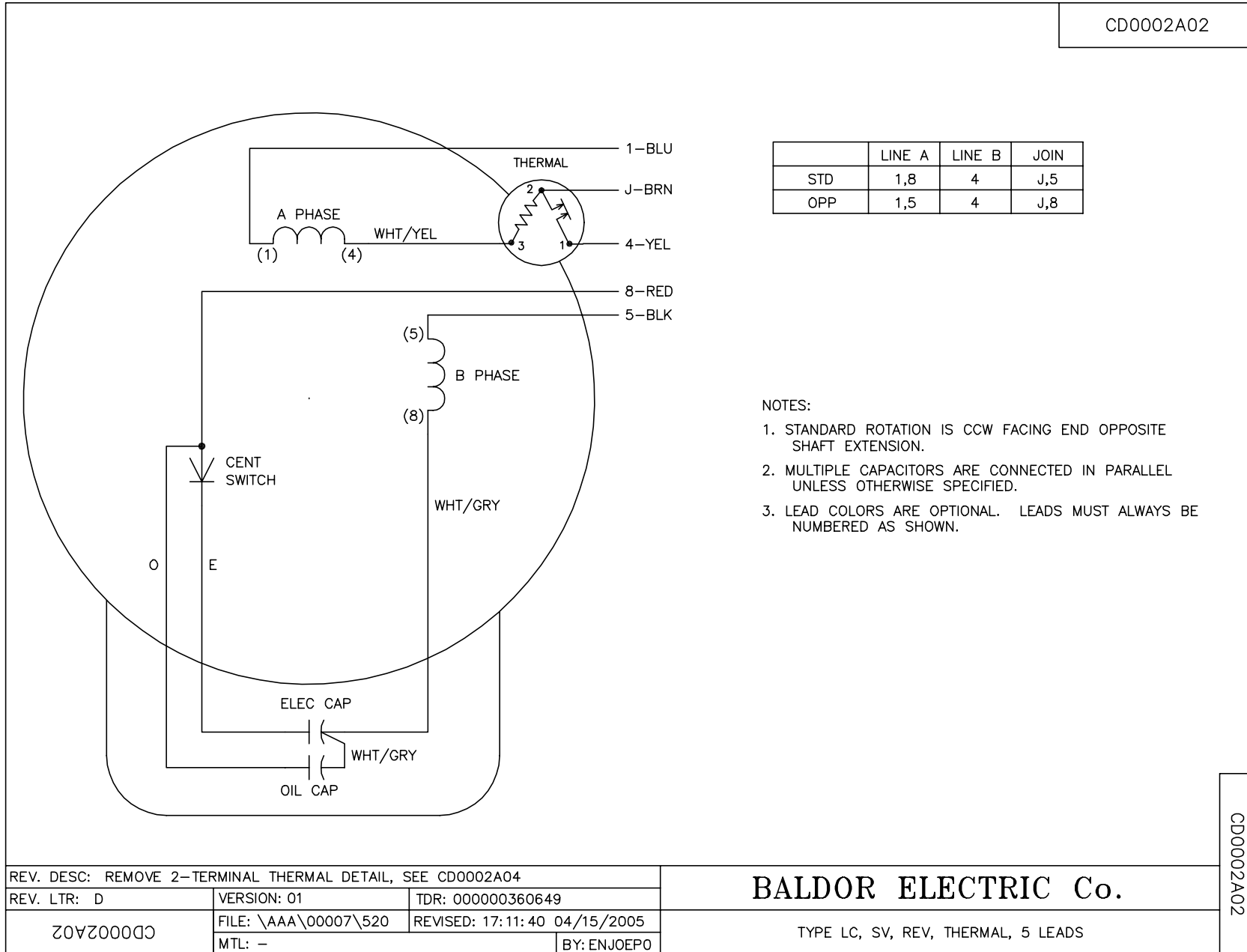
1.5 HP 1 PH 60 HZ 1760 RPM 277 V 3540 LC
 TORQUES(LB-FT): PO=12.3 PU=12.4 LR=15.5 LRA=47.9



5/13/2020 ACPERF, record # 61966



CD0002A02



CD0002A02

REV. DESC: REMOVE 2-TERMINAL THERMAL DETAIL, SEE CD0002A04		
REV. LTR: D	VERSION: 01	TDR: 000000360649
Z0VZ00000 CD0002A02	FILE: \AAA\00007\520	REVISED: 17:11:40 04/15/2005
	MTL: -	BY: ENJOEPO

BALDOR ELECTRIC Co.

TYPE LC, SV, REV, THERMAL, 5 LEADS